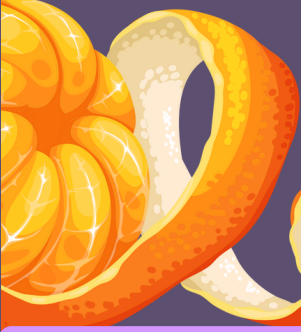


IN THIS ISSUE:

- 1 Your guide to chemical peels
- 2 Shed the Dead Étage Special!
- 3 Product Spotlight - ZO Enzymatic Peel
- 4 Save the Date - Mahj @ Étage



YOUR GUIDE TO CHEMICAL PEELS



A facial peel, also known as a chemical peel, is a skincare treatment that uses a chemical solution to exfoliate and remove the outer layers of the skin. This process helps improve skin texture, reduce the appearance of fine lines, acne scars, sun damage, and uneven pigmentation, revealing fresher, smoother skin underneath. Chemical peels are classified into 3 levels depending on their depth of penetration.

1. Superficial (Light) Peels

- Depth: Only affect the epidermis (top layer of skin).
- Uses: Gentle exfoliation, improve dullness, texture, fine lines, mild acne, and pigmentation.
- Downtime: Minimal—usually mild redness or flaking for a few days.
- Examples:
 - Alpha Hydroxy Acids (AHAs): Glycolic acid (20–30%), lactic acid, mandelic acid.

2. Medium-Depth Peels

- Depth: Penetrate into the epidermis and upper dermis.
- Uses: Moderate sun damage, deeper pigmentation, melasma, fine-to-moderate wrinkles, acne scars.
- Downtime: Redness, swelling, and peeling that can last 5–10 days.
- Example:
 - Trichloroacetic acid (TCA): 20–35%.

3. Deep Peels

- Depth: Reach the deep reticular dermis.
- Uses: Severe wrinkles, advanced sun damage, precancerous lesions, deep scars.
- Downtime: Significant—2–3 weeks of recovery with redness that may last months. Requires medical supervision, often sedation.
- Examples:
 - Phenol peels

SHED THE DEAD ÉTAGE SPECIAL

1 ZO Stimulator Peel
3 Dermaplane Treatments
ZO Daily Skincare Regimen

Enjoy this package for \$500!
Must pre-pay by October 31st.
Cannot be combined with other offers.

This unique combination of exfoliation, regeneration, and nourishment is great for improving skin that looks dull. This treatment has NO downtime and is safe for all skin types.

Call 859-331-5025 to purchase your package today!



PEEL AT HOME

With the ZO Skin Health Enzymatic Peel

No time for downtime? Can't come in to take advantage of our Shed the Dead Special?



Try this superficial AHA enzymatic peel to jump start your shed and get glowing skin in time for the holidays!

SAVE THE DATE MAHJ AT ÉTAGE NOVEMBER 5TH

12PM-2PM
KENWOOD LOCATION

Enjoy afternoon tea with friends, open play Mahjong, and custom face masks prepared by our licensed advanced medical aesthetician!

\$100/PERSON

Call 859-331-5025 to reserve your spot.

Formal invitation to follow

